

## @Road Pathway PE<sub>SM</sub>



### Efficiently Manage Your Mobile Workforce

The @Road Pathway<sub>SM</sub> product line provides a mid-range, on-demand Field Force Management (FFM) solution that integrates GPS, wireless and Internet technologies into mobile software applications that help you manage overall mobile workforce performance, reduce costs and maximize customers' satisfaction with your field services.

When customer needs arise, @Road Pathway allows you to quickly locate your mobile workers using an on-screen map, then identify the closest vehicle for dispatch. Use it to protect your workers, vehicles and other assets in the field, or view reports to identify workforce inefficiencies. Its map-based information and reports can be accessed by managers and dispatchers at any time from any web connection.

### @Road Pathway PE—an Effective Solution with a Hand-Held Advantage

With @Road Pathway PE (Pocket Edition), drivers' GPS-enabled mobile phones serve as the mechanisms that deliver up-to-the-minute location information through the @Road<sup>®</sup> online service to the customer's back office. Using this solution, customers can take advantage of productivity-enhancing @Road location-based services both inside and outside the vehicle—wherever they have their mobile phone.

Through its TimeConnect feature, @Road Pathway PE tracks workers' time and tasks, then provides reports comparing actual work times with scheduled shifts. This solution also

allows drivers to attach an optional bar code scanner for managing work orders, inventory and invoicing.

### Unparalleled, Uninterrupted Performance

@Road Pathway solutions are highly reliable and available, with dual data centers in widely separated locations. The sophisticated @Road on-demand architecture is designed to support hundreds of thousands of users and millions of transactions, with a high level of security and integrity. @Road Pathway can offer superior national coverage through multiple major wireless carrier networks.

Together with Field Service Management and Field Asset Management offerings, Field Force Management tools like @Road Pathway help complete the array of @Road end-to-end Mobile Resource Management (MRM) solutions.

#### @Road Pathway PE

- Provides an effective mid-range Field Force Management solution for improving your mobile workforce productivity
- Offers insight into the productivity of mobile workers—in or out of their vehicles—whenever their @Road-enabled hand-held wireless devices are switched on
- Automatically records workers' start/end times and tasks through the TimeConnect feature

## @Road Pathway PE Features

### Advanced MRM

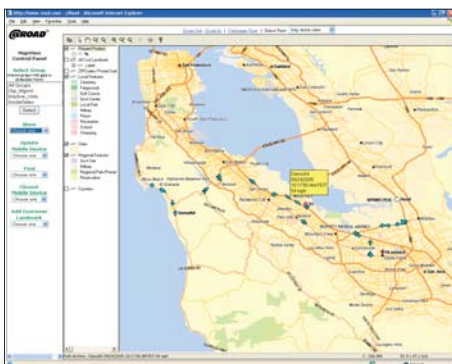
- View the real-time locations of your mobile workforce
- Track stop times and mileage totals
- Receive alerts on speed or landmark proximity
- See traveled paths with automatic 5-minute update rates
- Customize maps and designate landmarks

### Flexible Reporting

- Generate MRM reports on demand
- Select from an array of standard reports
- Export reports to any standard database or application
- Retrieve stored data for up to 14 days

### Easy Administration

- Create workgroups
- Administer mobile devices online from any location



@Road MapView

## Convenient Communication

- Automatically record workers' start/end times and tasks with TimeConnect

## Extensive Support

- Benefit from real-time, proactive system monitoring and support
- Receive live online training
- Enjoy 90 days of free 24x7 online technical support and nationwide phone support
- Request service engineer or integration support

**Activity - Detail**

Activity Report from 12/30/05 12:00 AM to 12/31/05 12:00 AM  
(Note: Date/Time and Stop Duration are rounded off to the nearest minute)

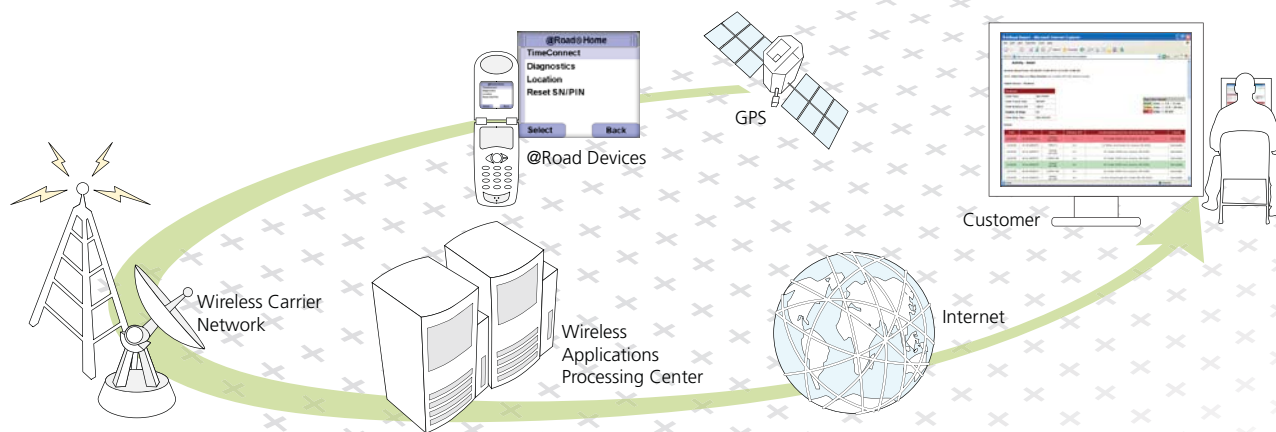
Mobile Device: 88000000

Summary	Stop Color Legend
Total Time: 2:00:00:00	Green: stop <= 3.0 < 15 min
Total Travel Time: 1:50:00:00	Yellow: stop >= 15 & < 60 min
Total Distance (MI): 8.0	Red: stop >= 60 min
Number of Stops: 8	
Total Stop Time: 1:10:00:00	

**Details:**

Route	Start	End	Mode	Distance (MI)	Location (Address/Time/Speed/Fly/Stop Pg)	Priority
12/30/05	12:00:00:00	12:00:00:00	Travel	0.0	4700 Fremont Blvd/San Francisco, CA 94508	Normal
12/30/05	12:00:00:00	12:00:00:00	Travel	0.0	4700 Fremont Blvd/San Francisco, CA 94508	Normal
12/30/05	12:00:00:00	12:00:00:00	Travel	0.0	4700 Fremont Blvd/San Francisco, CA 94508	Normal
12/30/05	12:00:00:00	12:00:00:00	Travel	0.0	4700 Fremont Blvd/San Francisco, CA 94508	Normal
12/30/05	12:00:00:00	12:00:00:00	Travel	0.0	4700 Fremont Blvd/San Francisco, CA 94508	Normal
12/30/05	12:00:00:00	12:00:00:00	Travel	0.0	4700 Fremont Blvd/San Francisco, CA 94508	Normal
12/30/05	12:00:00:00	12:00:00:00	Travel	0.0	4700 Fremont Blvd/San Francisco, CA 94508	Normal
12/30/05	12:00:00:00	12:00:00:00	Travel	0.0	4700 Fremont Blvd/San Francisco, CA 94508	Normal

@Road Activity Detail Report



www.road.com ■ North America: 1-877-7AtRoad ■ Europe: 44 (0) 1473-696-300 ■ Asia Pacific: 91 (44) 2254-1941

## About @Road

@Road, Inc. is a leading global provider of solutions designed to automate the management of mobile resources and to optimize the service delivery process for customers across a variety of industries. @Road delivers Mobile Resource Management (MRM) solutions in three key areas: Field Force Management, Field Service Management and Field Asset Management.

©2006 @Road, Inc. All rights reserved. @Road, the @Road logo, @Road Pathway and @Road Pathway PE are trademarks, registered trademarks or service marks of @Road, Inc. All other trademarks or service marks are the property of their respective owners.



**@Road, Inc.**  
World Headquarters  
47071 Bayside Parkway  
Fremont, CA 94538  
Tel: 1-877-7AtRoad  
www.road.com

**@Road, Ltd. (APAC)**  
901 (A1) & 902 (A2), Tidel Park  
No. 4 Canal Bank Road  
Taramani, Chennai 600 113  
Tel: 91 (44) 2254-1941  
www.road.com

**@Road, Ltd. (EMEA)**  
North Felaw Maltings  
48 Felaw Street  
Ipswich IP2 8HE, United Kingdom  
Tel: 44 (0) 1473-696-300  
www.road.com